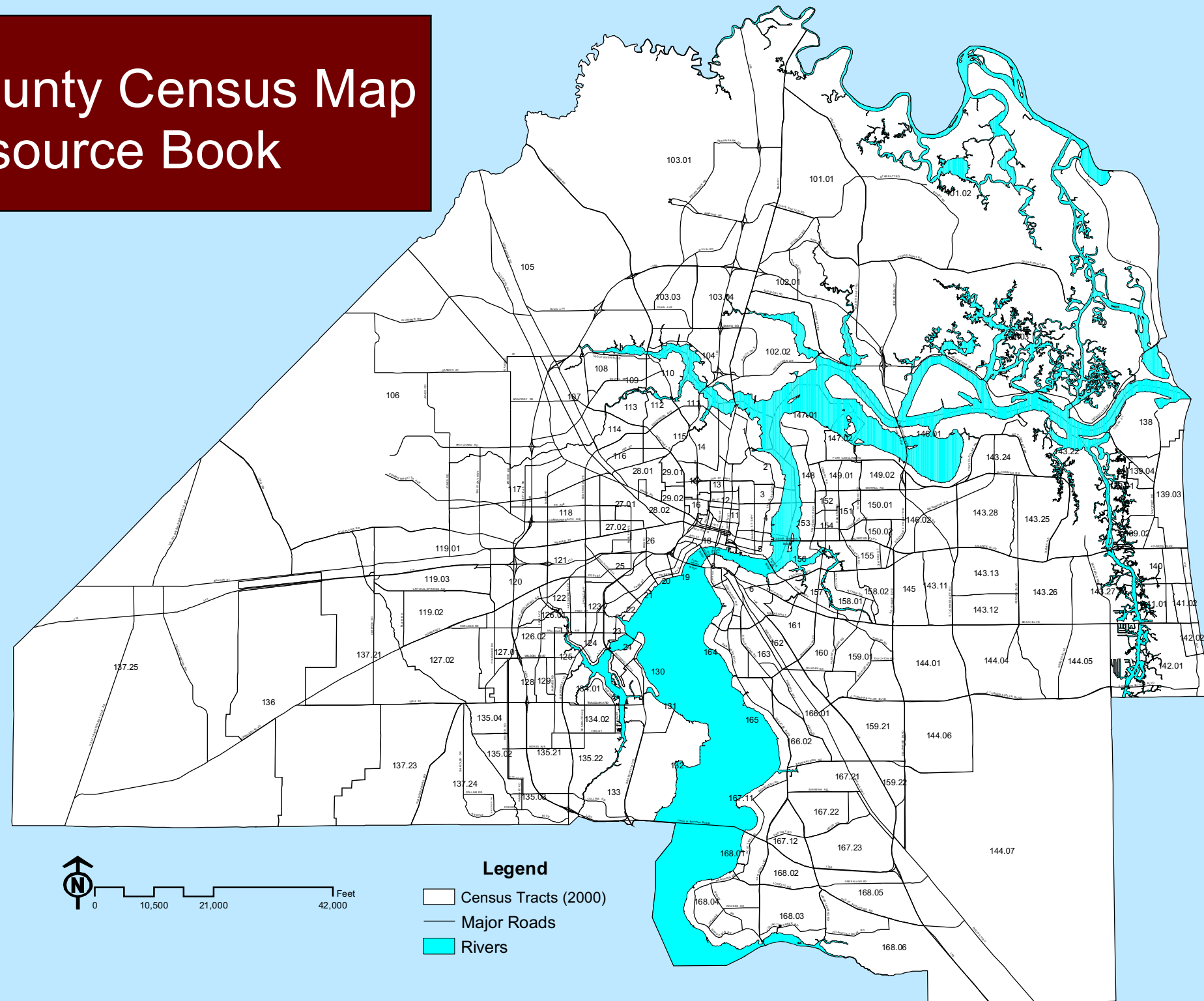


Duval County Census Map Resource Book



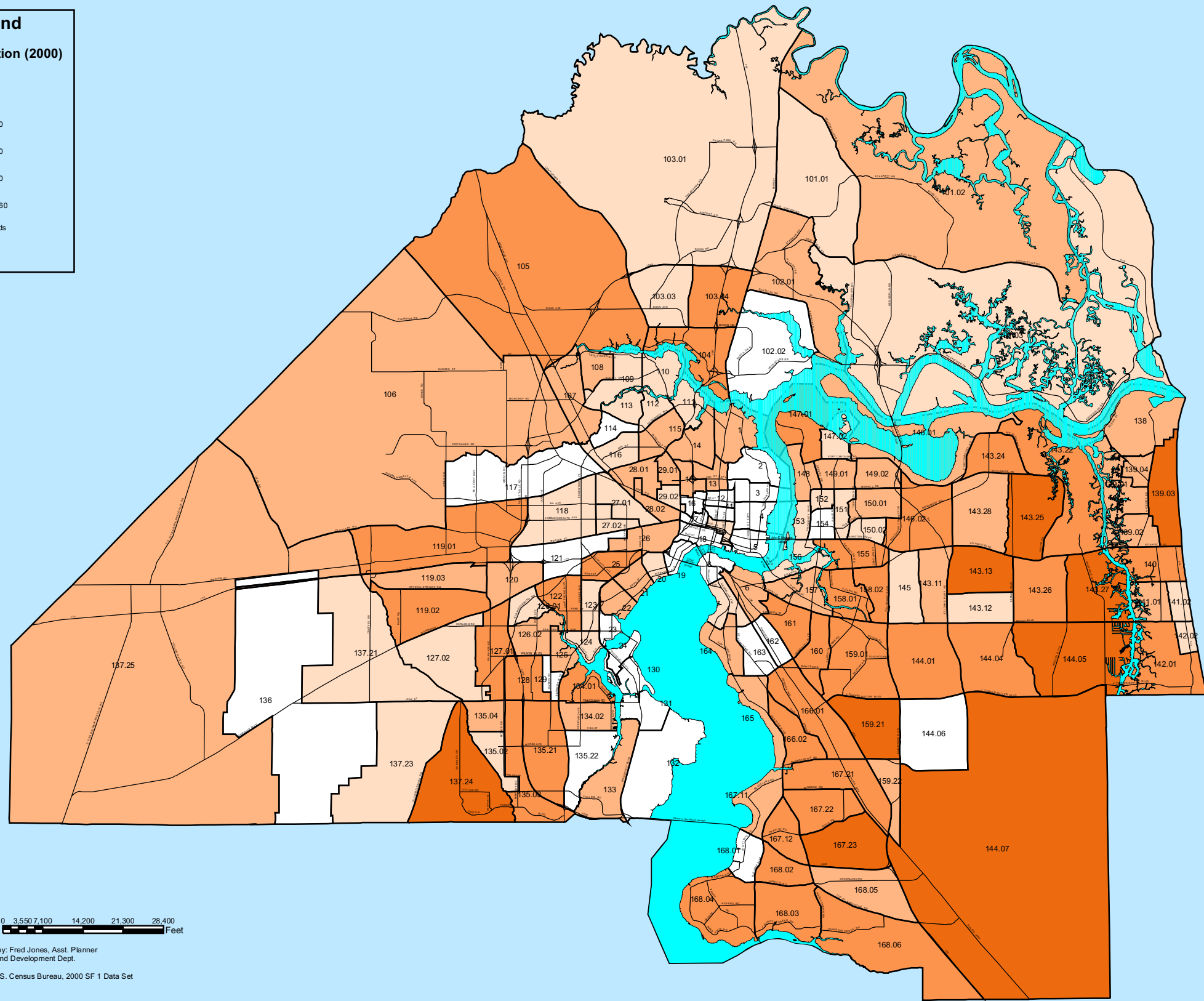
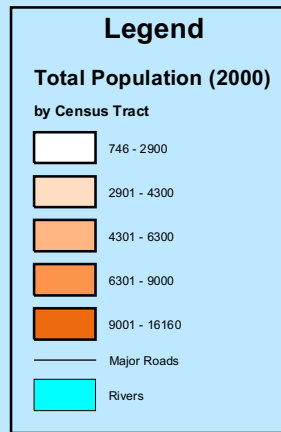
Prepared by: City of Jacksonville Planning and Development Department



Census Map Index

1. Total Population by Census Tract (2000)
2. White Alone
3. Black or African American Alone
4. Asian Alone
5. Hispanic or Latino by Census Tract
6. Total Population Under Age 5
7. Total Population Age 5-19
8. Senior Citizen Population Age 65 and Above
9. Median Age
10. High School Graduation Rates
11. Bachelor's Degree or Higher
12. Median Household Income (1999 Dollars)
13. Poverty Rates
14. Tenure: Owner Occupied Housing Units
15. Tenure: Renter Occupied Housing Units
16. Single Mothers
17. Disabled Population
18. Public Transportation Use
19. Carpooling

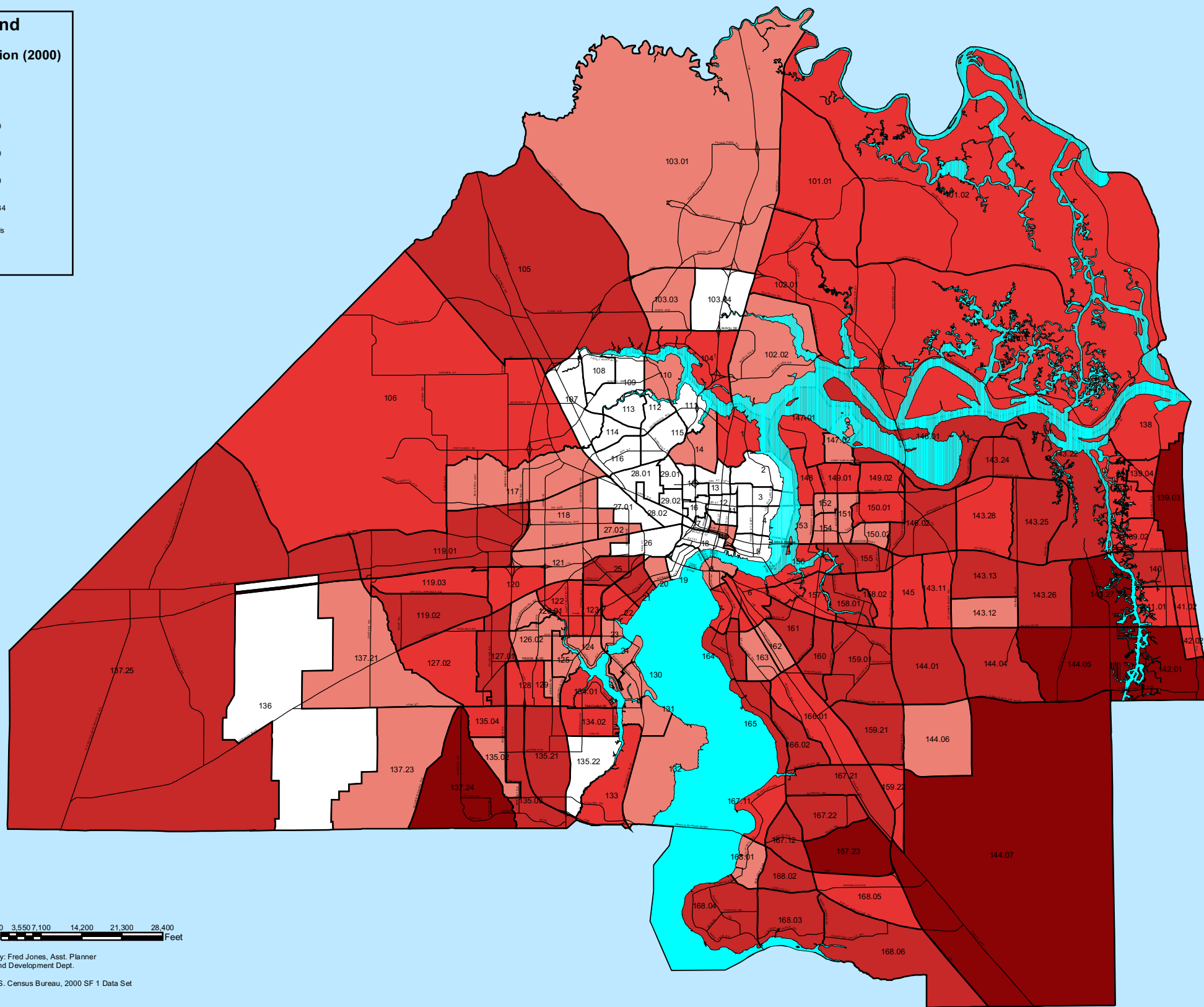
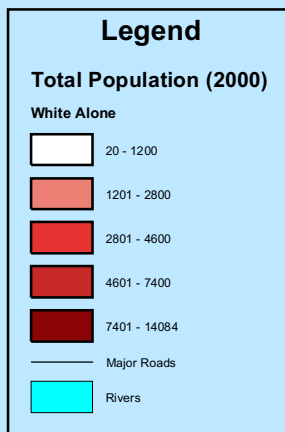
Total Population by Census Tract U.S. Census 2000



0 3,550 7,100 14,200 21,300 28,400
Feet

Prepared by: Fred Jones, Asst. Planner
Planning and Development Dept.
12/8/03
Source: U.S. Census Bureau, 2000 SF 1 Data Set

Total Population by Census Tract White Alone



0 3,550 7,100 14,200 21,300 28,400
Feet

Prepared by: Fred Jones, Asst. Planner
Planning and Development Dept.
12/8/03
Source: U.S. Census Bureau, 2000 SF 1 Data Set